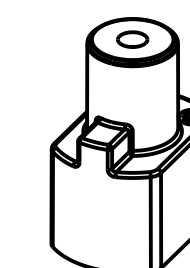
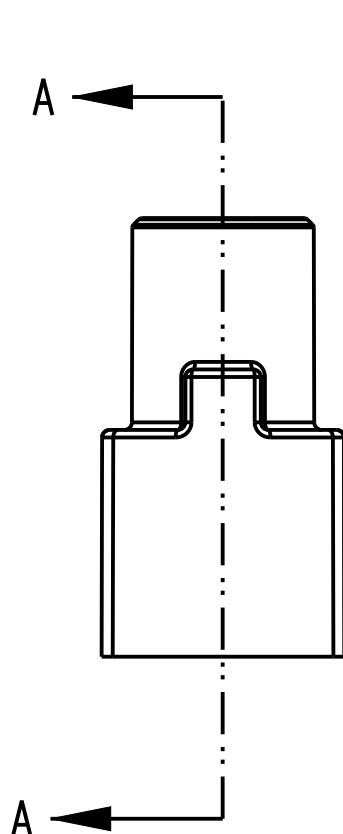


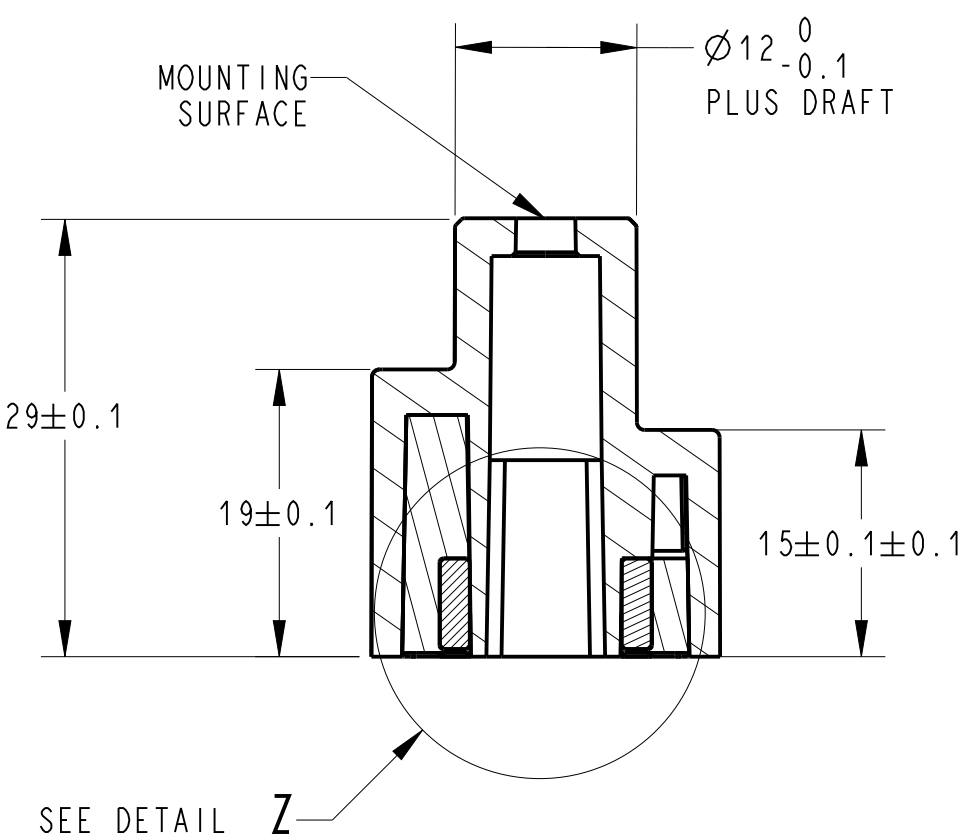
DETAIL Z
SCALE 4:1



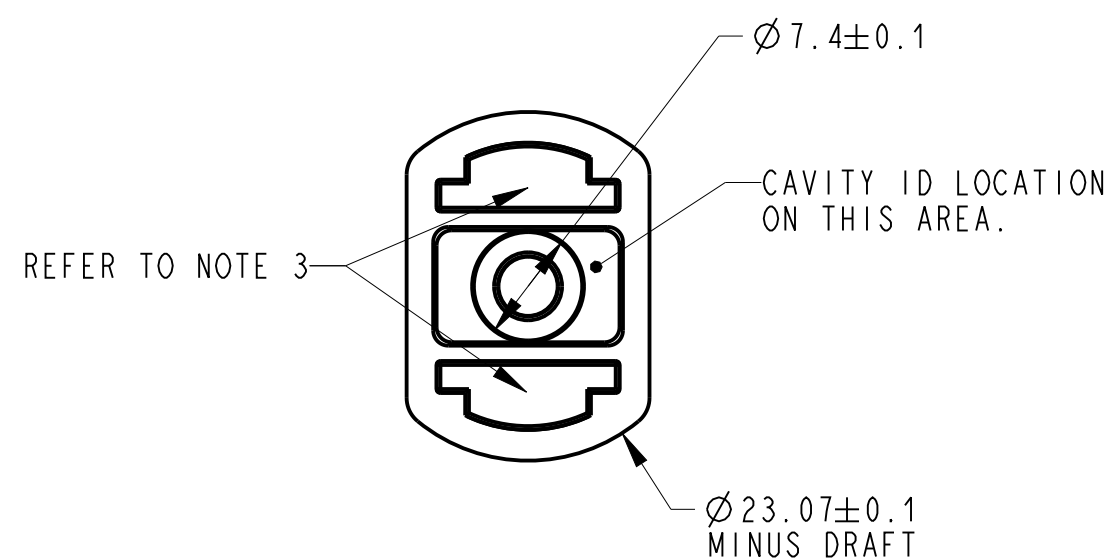
TRIMETRIC VIEW



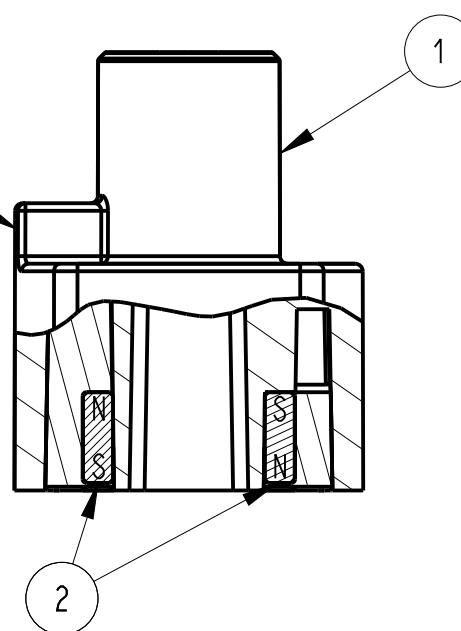
SCALE 2:1



SECTION A-A

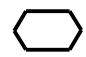



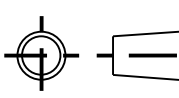
MAGNET CARRIER
KEYING FEATURE



DETAIL Y
VIEW SHOWING MAGNET POLES
IN RELATION WITH THE CARRIER
KEYING FEATURE

NOTES:

1. MAGNETS SHOULD BE PLACED IN THE BOTTOM OF THE MAGNET CARRIER POCKETS AND EPOXIED INTO PLACE WITH HYSOL 4212 EPOXY ADHESIVE.
2. THE POLE FACES OF THE MAGNET MUST BE ORIENTED AS SHOWN IN DETAIL VIEW "Z" AND RELATIVE TO KEYING FEATURE AS SHOWN ON DETAIL "Y". MAGNETS MUST BE 100% TESTED FOR MAGNET ORIENTATION.
3. EPOXY PERMITTED IN MAGNET POCKETS ONLY. ALL OTHER SURFACES MUST BE EPOXY FREE.
4. EPOXY MUST COMPLETELY COVER THE MAGNETS BUT REMAINS BELOW THE HOUSING SURFACE.
5. THE SYMBOL  WITH INCLUDED NUMBER INDICATES THE SEQUENCE OF NOTING INSPECTION REPORTS.
6. PARTS SHALL BE CLEAN AND FREE OF CRACKS, FOREIGN MATTER, DISCOLORATION, CHIPS, WELD OR FLOW LINES AND WARPAGE UNLESS APPROVED BY ZF DESIGN ENGINEERING.
7. BOTH MAGNETS WITHIN THE MAGNET CARRIERS SHALL BE FROM THE SAME MATERIAL LOT TO REDUCE MAGNET TO MAGNET VARIATION.
8. RECOMMENDED FASTENER AND TORQUE: M4 CAP SCREW 2.82 Nm (25 LBS-IN)

DWN: AF		CONFIDENTIAL AND PROPRIETARY: ALL INFORMATION OR INVENTIONS CONTAINED IN THIS DOCUMENT OR DERIVED FROM THE INFORMATION THEREIN IS OWNED BY ZF ELECTRONIC SYSTEMS, AND IS CONFIDENTIAL AND PROPRIETARY. REVIEW OR POSSESSION OF THIS DOCUMENT INDICATES AGREEMENT THAT SUCH INFORMATION AND INVENTIONS WILL NOT BE DISCLOSED, REPRODUCED OR OTHERWISE USED IN ANY WAY WITHOUT EXPRESS WRITTEN PERMISSION FROM AN AUTHORIZED REPRESENTATIVE OF ZF ELECTRONIC SYSTEMS.				 ZF Electronic Systems PLEASANT PRAIRIE, WISCONSIN U.S.A. NAME / DESCRIPTION MAGNET CARRIER		
APVD: SM								
DATE: 08-NOV-05								
THIRD ANGLE PROJECTION								
		TOLERANCE UNLESS SPECIFIED				C ITEM NO. AS500106		
PROJECT/ CSR		DWG UNITS	X.X	X.XX	ANGLES	SCALE: 1:1 SH 1 OF 1		
mm		± 0.30	± 0.100	± 1.0°				

E	Z000534681	2020-02-06	TCH	TB
REV	ECO NO.	DATE	PREP	APVD

ORIGINAL ON PRO/E